

This tool is an ongoing experiment in better HTML checking, and its behavior remains subject to change

Showing results for https://sgp182.neocities.org/Musicales/ (checked with vnu 25.10.16)

Checker Input

Show

☐ source

☐ outline

☐ image report

Options...

Check by

address

▼

https://sgp182.neocities.org/Musicales/

Check

Use the Message Filtering button below to hide/show particular messages, and to see total counts of errors and warnings.

Message Filtering

1.

Error

Element `span` not allowed as child of element `ul` in this context. (Suppressing further errors from this subtree.)

From line 16, column 7; to line 16, column 12

`ul>↵INICIO`

Contexts in which element `span` may be used:

Where `phrasing content` is expected.

Content model for element `ul`:

Zero or more `li` and `script-supporting` elements.
2.

Error

Text not allowed in element `ul` in this context.

From line 16, column 26; to line 16, column 27

`CIO↵`

Content model for element `ul`:

Zero or more `li` and `script-supporting` elements.
3.

Error

Element `a` not allowed as child of element `ul` in this context. (Suppressing further errors from this subtree.)

From line 17, column 7; to line 17, column 30

`> |↵HEATHE`

Contexts in which element `a` may be used:

Where `phrasing content` is expected.

Content model for element `ul`:

Zero or more `li` and `script-supporting` elements.
4.

Error

Text not allowed in element `ul` in this context.

From line 17, column 56; to line 17, column 57

`USICAL↵`

Content model for element `ul`:

Zero or more `li` and `script-supporting` elements.
5.

Error

Element `a` not allowed as child of element `ul` in this context. (Suppressing further errors from this subtree.)

From line 18, column 7; to line 18, column 30

`> |↵HAMILT`

Contexts in which element `a` may be used:

Where `phrasing content` is expected.

Content model for element `ul`:

Zero or more `li` and `script-supporting` elements.
6.

Error

Text not allowed in element `ul` in this context.

From line 18, column 43; to line 18, column 44

`MILTON↵`

Content model for element `ul`:

Zero or more `li` and `script-supporting` elements.
7.

Error

Element `a` not allowed as child of element `ul` in this context. (Suppressing further errors from this subtree.)

From line 19, column 7; to line 19, column 30

`> |↵WAITRE`

Contexts in which element `a` may be used:

Where `phrasing content` is expected.

Content model for element `ul`:

Zero or more `li` and `script-supporting` elements.
8.

Error

Text not allowed in element `ul` in this context.

From line 19, column 43; to line 19, column 44

`ITRESS↵`

Content model for element `ul`:

Zero or more `li` and `script-supporting` elements.
9.

Error

Element `a` not allowed as child of element `ul` in this context. (Suppressing further errors from this subtree.)

From line 20, column 7; to line 20, column 39

`> |↵TICK,`

Contexts in which element `a` may be used:

Where `phrasing content` is expected.

Content model for element `ul`:

Zero or more `li` and `script-supporting` elements.
10.

Error

Text not allowed in element `ul` in this context.

From line 20, column 62; to line 20, column 63

`.BOOM! ↵`

Content model for element `ul`:

Zero or more `li` and `script-supporting` elements.
11.

Error

Element `a` not allowed as child of element `ul` in this context. (Suppressing further errors from this subtree.)

From line 21, column 7; to line 21, column 26

`> |↵RENT</`

Contexts in which element `a` may be used:

Where `phrasing content` is expected.

Content model for element `ul`:

Zero or more `li` and `script-supporting` elements.
12.

Error

Text not allowed in element `ul` in this context.

From line 21, column 35; to line 21, column 36

`">RENT↵`

Content model for element `ul`:

Zero or more `li` and `script-supporting` elements.
13.

Error

Element `a` not allowed as child of element `ul` in this context. (Suppressing further errors from this subtree.)

From line 22, column 7; to line 22, column 28

`> |↵WICKED`

Contexts in which element `a` may be used:

Where `phrasing content` is expected.

Content model for element `ul`:

Zero or more `li` and `script-supporting` elements.

[About this checker](#) • [Report an issue](#)

LUEGO DE LAS CORRECCIONES

Nu Html Checker

This tool is an ongoing experiment in better HTML checking, and its behavior remains subject to change

Showing results for https://sgp182.neocities.org/Musicales/ (checked with vnu 25.10.16)

Checker Input

Show

☐ source

☐ outline

☐ image report

Options...

Check by

address

▼

https://sgp182.neocities.org/Musicales/

Check

[About this checker](#) • [Report an issue](#)

Accessibility Review

Accessibility Review (Guidelines: [WCAG 2.0 \(Level AA\)](#))

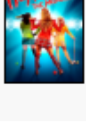
[Known Problems\(0\)](#) [Likely Problems \(0\)](#) [Potential Problems \(63\)](#) [HTML Validation](#) [CSS Validation](#)

1.1 Text Alternatives: Provide text alternatives for any non-text content

Success Criteria 1.1.1 Non-text Content (A)

Check 16: [Alt text is not empty and image may be decorative.](#)

Line 43, Column 15:



TODAS LAS IMAGENES PUESTAS*

Check 8: [img element may require a long description.](#)

Line 43, Column 15:



TODAS LAS IMAGENES PUESTAS*

1.3 Adaptable: Create content that can be presented in different ways (for example simpler layout) without losing information or structure.

Success Criteria 1.3.1 Info and Relationships (A)

Check 271: [dir attribute may be required to identify changes in text direction.](#)

Line 9, Column 1:

```
<body>
<header>
  <h1>EL MUNDO DE LOS MUSICALES</h1>
</header>

<nav>
  <ul>
    ...
```

Check 270: [Unicode right-to-left marks or left-to-right marks may be required.](#)

Line 9, Column 1:

```
<body>
<header>
  <h1>EL MUNDO DE LOS MUSICALES</h1>
</header>

<nav>
  <ul>
    ...
```

Check 248: [Visual lists may not be properly marked.](#)

Line 9, Column 1:

```
<body>
<header>
  <h1>EL MUNDO DE LOS MUSICALES</h1>
</header>

<nav>
  <ul>
    ...
```

Check 136: [Data table may require th elements.](#)

Line 37, Column 5:

```
<table>
  <tr>
    <td>
      <h3>HEATHERS:THE MUSICAL</h3>
      <figure>
        ...
```

Success Criteria 1.3.3 Sensory Characteristics (A)

Check 250: [Text may refer to items by shape, size, or relative position alone.](#)

Line 9, Column 1:

```
<body>
<header>
  <h1>EL MUNDO DE LOS MUSICALES</h1>
</header>

<nav>
  <ul>
    ...
```

Check 133: [Layout table may not linearize.](#)

Line 37, Column 5:

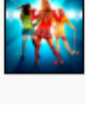
```
<table>
  <tr>
    <td>
      <h3>HEATHERS:THE MUSICAL</h3>
      <figure>
        ...
```

1.4 Distinguishable: Make it easier for users to see and hear content including separating foreground from background.

Success Criteria 1.4.1 Use of Color (A)

Check 14: [Image may be using color alone.](#)

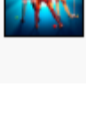
Line 43, Column 15:



TODAS LAS IMAGENES PUESTAS*

Check 251: [Image may contain text with poor contrast.](#)

Line 43, Column 15:

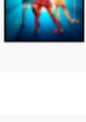


TODAS LAS IMAGENES PUESTAS*

Success Criteria 1.4.5 Images of Text (AA)

Check 11: [Image may contain text that is not in Alt text.](#)

Line 43, Column 15:



TODAS LAS IMAGENES PUESTAS*

2.4 Navigable: Provide ways to help users navigate, find content, and determine where they are.

Success Criteria 2.4.1 Bypass Blocks (A)

Check 28: [Document may be missing a "skip to content" link.](#)

Line 9, Column 1:

```
<body>
<header>
  <h1>EL MUNDO DE LOS MUSICALES</h1>
</header>

<nav>
  <ul>
    ...
```

Check 262: [Groups of links with a related purpose are not marked.](#)

Line 9, Column 1:

```
<body>
<header>
  <h1>EL MUNDO DE LOS MUSICALES</h1>
</header>

<nav>
  <ul>
    ...
```

Success Criteria 2.4.2 Page Titled (A)

Check 54: [title might not describe the document.](#)

Line 4, Column 4:

<title>Musicales</title>

Success Criteria 2.4.4 Link Purpose (In Context) (A)

Check 19: [Link text may not be meaningful.](#)

Line 17, Column 7:

HEATHERS: THE MUSICAL

Line 18, Column 7:

HAMILTON

Line 19, Column 7:

WAITRESS

Line 20, Column 7:

TICK, TICK...BOOM!

Line 21, Column 7:

RENT

Line 22, Column 7:

WICKED

Line 42, Column 13:

...

Line 88, Column 13:

...

Line 99, Column 80:

Volver a la página principal

Success Criteria 2.4.5 Multiple Ways (AA)

Check 184: [Site missing site map.](#)

Line 9, Column 1:

```
<body>
<header>
  <h1>EL MUNDO DE LOS MUSICALES</h1>
</header>

<nav>
  <ul>
    ...
```

Success Criteria 2.4.6 Headings and Labels (AA)

Check 42: [h1 may be used for formatting.](#)

Line 11, Column 5:

<h1>EL MUNDO DE LOS MUSICALES</h1>

Check 43: [h2 may be used for formatting.](#)

Line 29, Column 7:

<h2>DEL ESCENARIO A LA PANTALLA GRANDE</h2>

Check 44: [h3 may be used for formatting.](#)

Line 40, Column 11:

<h3>HEATHERS:THE MUSICAL</h3>

Line 49, Column 11:

<h3> HAMILTON</h3>

Line 58, Column 11:

<h3>WAITRESS</h3>

Line 68, Column 11:

<h3>TICK, TICK...BOOM!</h3>

Line 77, Column 11:

<h3>RENT</h3>

Line 86, Column 11:

<h3>WICKED</h3>

3.2 Predictable: Make Web pages appear and operate in predictable ways.

Success Criteria 3.2.3 Consistent Navigation (AA)

Check 276: [Repeated components may not appear in the same relative order each time they appear.](#)

Line 9, Column 1:

```
<body>
<header>
  <h1>EL MUNDO DE LOS MUSICALES</h1>
</header>

<nav>
  <ul>
    ...
```

Success Criteria 3.2.4 Consistent Identification (AA)

Check 131: [Long quotations may not be marked using the blockquote element.](#)

Line 9, Column 1:

```
<body>
<header>
  <h1>EL MUNDO DE LOS MUSICALES</h1>
</header>

<nav>
  <ul>
    ...
```

Nu Html Checker

This tool is an ongoing experiment in better HTML checking, and its behavior remains subject to change

Showing results for <https://sgp182.neocities.org/Musicales/heathers> (checked with vnu 25.10.16)

Checker Input

Show ☐ source ☐ outline ☐ image report

Options...

Check by

address

<https://sgp182.neocities.org/Musicales/heathers>

Check

Use the Message Filtering button below to hide/show particular messages, and to see total counts of errors and warnings.

Message Filtering

1.

Error

Element `a` not allowed as child of element `ul` in this context. (Suppressing further errors from this subtree.)

From line 16, column 7; to line 16, column 27

`ul><div>INICIO</div>`

Contexts in which element `a` may be used:

Where `phrasing content` is expected.

Content model for element `ul`:

Zero or more `li` and `script-supporting` elements.

2.

Error

Text not allowed in element `ul` in this context.

From line 16, column 38; to line 16, column 39

`INICIO<div>`

Content model for element `ul`:

Zero or more `li` and `script-supporting` elements.

3.

Error

Element `span` not allowed as child of element `ul` in this context. (Suppressing further errors from this subtree.)

From line 17, column 7; to line 17, column 12

`>|<div>HEATHE</div>`

Contexts in which element `span` may be used:

Where `phrasing content` is expected.

Content model for element `ul`:

Zero or more `li` and `script-supporting` elements.

4.

Error

Text not allowed in element `ul` in this context.

From line 17, column 41; to line 17, column 42

`CAL<div>`

Content model for element `ul`:

Zero or more `li` and `script-supporting` elements.

5.

Error

Element `a` not allowed as child of element `ul` in this context. (Suppressing further errors from this subtree.)

From line 18, column 7; to line 18, column 30

`>|<div>HAMILT</div>`

Contexts in which element `a` may be used:

Where `phrasing content` is expected.

Content model for element `ul`:

Zero or more `li` and `script-supporting` elements.

6.

Error

Text not allowed in element `ul` in this context.

From line 18, column 43; to line 18, column 44

`MILTON<div>`

Content model for element `ul`:

Zero or more `li` and `script-supporting` elements.

7.

Error

Element `a` not allowed as child of element `ul` in this context. (Suppressing further errors from this subtree.)

From line 19, column 7; to line 19, column 30

`>|<div>WAITRE</div>`

Contexts in which element `a` may be used:

Where `phrasing content` is expected.

Content model for element `ul`:

Zero or more `li` and `script-supporting` elements.

8.

Error

Text not allowed in element `ul` in this context.

From line 19, column 43; to line 19, column 44

`ITRESS<div>`

Content model for element `ul`:

Zero or more `li` and `script-supporting` elements.

9.

Error

Element `a` not allowed as child of element `ul` in this context. (Suppressing further errors from this subtree.)

From line 20, column 7; to line 20, column 39

`>|<div>TICK,</div>`

Contexts in which element `a` may be used:

Where `phrasing content` is expected.

Content model for element `ul`:

Zero or more `li` and `script-supporting` elements.

10.

Error

Text not allowed in element `ul` in this context.

From line 20, column 62; to line 20, column 63

`.BOOM!<div>`

Content model for element `ul`:

Zero or more `li` and `script-supporting` elements.

11.

Error

Element `a` not allowed as child of element `ul` in this context. (Suppressing further errors from this subtree.)

From line 21, column 7; to line 21, column 26

`>|<div>RENT</div>`

Contexts in which element `a` may be used:

Where `phrasing content` is expected.

Content model for element `ul`:

Zero or more `li` and `script-supporting` elements.

12.

Error

Text not allowed in element `ul` in this context.

From line 21, column 35; to line 21, column 36

`">RENT<div>`

Content model for element `ul`:

Zero or more `li` and `script-supporting` elements.

13.

Error

Element `a` not allowed as child of element `ul` in this context. (Suppressing further errors from this subtree.)

From line 22, column 7; to line 22, column 28

`>|<div>WICKED</div>`

Contexts in which element `a` may be used:

Where `phrasing content` is expected.

Content model for element `ul`:

Zero or more `li` and `script-supporting` elements.

14.

Error

The `frameborder` attribute on the `iframe` element is obsolete. [Use CSS instead.](#)

From line 30, column 7; to line 30, column 325

`h2><div><iframe width="560" height="315" src="https://www.youtube.com/embed/rUco8XjgTv?si=sEiliD0maOEiR1uR"...pe; picture-in-picture; web-share" referrerpolicy="strict-origin-when-cross-origin" allowfullscreen></ifra</div>`

15.

Error

Bad value `100%` for attribute `width` on element `iframe`: Expected a digit but saw `%` instead.

From line 143, column 7; to line 143, column 314

`h2><div><iframe data-testid="embed-iframe" style="border-radius:12px" src="https://open.spotify.com/embed/al..." allow="autoplay; clipboard-write; encrypted-media; fullscreen; picture-in-picture" loading="lazy"></ifra</div>`

16.

Error

The `frameborder` attribute on the `iframe` element is obsolete. [Use CSS instead.](#)

From line 143, column 7; to line 143, column 314

`h2><div><iframe data-testid="embed-iframe" style="border-radius:12px" src="https://open.spotify.com/embed/al..." allow="autoplay; clipboard-write; encrypted-media; fullscreen; picture-in-picture" loading="lazy"></ifra</div>`

Document checking completed.

Used the HTML parser.

Total execution time 58 milliseconds.

[About this checker](#) • [Report an issue](#)

LUEGO DE LAS CORRECCIONES

Nu Html Checker

This tool is an ongoing experiment in better HTML checking, and its behavior remains subject to change

Showing results for <https://sgp182.neocities.org/Musicales/heathers> (checked with vnu 25.10.16)

Checker Input

Show ☐ source ☐ outline ☐ image report

Options...

Check by

address

<https://sgp182.neocities.org/Musicales/heathers>

Check

Document checking completed. No errors or warnings to show.

Used the HTML parser.

Total execution time 13 milliseconds.

[About this checker](#) • [Report an issue](#)

Accessibility Review

Accessibility Review (Guidelines: [WCAG 2.0 \(Level AA\)](#))

Known Problems(0) Likely Problems (8) Potential Problems (73) HTML Validation CSS Validation

1.3 Adaptable: Create content that can be presented in different ways (for example simpler layout) without losing information or structure.

Success Criteria 1.3.1 Info and Relationships (A)

Check 82: [p element may be misused \(could be a header\)](#).

⚠ **Line 67, Column 17:**

```
<p><strong>Ailsa Davidson</strong></p>
```

⚠ **Line 76, Column 17:**

```
<p><strong>Simon Gordon</strong></p>
```

⚠ **Line 85, Column 17:**

```
<p><strong>Mhairi Angus</strong></p>
```

⚠ **Line 94, Column 17:**

```
<p><strong>Maddison Firth</strong></p>
```

⚠ **Line 105, Column 17:**

```
<p><strong>Vivian Panka</strong></p>
```

⚠ **Line 114, Column 17:**

```
<p><strong>Teleri Hughes</strong></p>
```

⚠ **Line 123, Column 17:**

```
<p><strong>Rory Phelan</strong></p>
```

⚠ **Line 132, Column 17:**

```
<p><strong>Liam Doyle</strong></p>
```

LUEGO DE LAS CORRECCIONES

Accessibility Review

Accessibility Review (Guidelines: [WCAG 2.0 \(Level AA\)](#))

Known Problems(0) Likely Problems (0) Potential Problems (73) HTML Validation CSS Validation

✅ **Congratulations! No known problems.**

1.1 Text Alternatives: Provide text alternatives for any non-text content

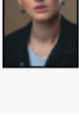
Success Criteria 1.1.1 Non-text Content (A)

Check 178: [Alt text does not convey the same information as the image.](#)

Line 65, Column 15:

```

```



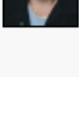
TODAS LAS IMAGENES PUESTAS*

Check 16: [Alt text is not empty and image may be decorative.](#)

Line 65, Column 15:

```

```



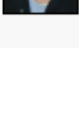
TODAS LAS IMAGENES PUESTAS*

Check 8: [img element may require a long description.](#)

Line 65, Column 15:

```

```



TODAS LAS IMAGENES PUESTAS*

1.3 Adaptable: Create content that can be presented in different ways (for example simpler layout) without losing information or structure.

Success Criteria 1.3.1 Info and Relationships (A)

Check 271: [dir attribute may be required to identify changes in text direction.](#)

Line 8, Column 1:

```
<body>

<header>
  <h1>HEATHERS: THE MUSICAL</h1>
</header>

<nav>
  <ul>
    <a ...
```

Check 270: [Unicode right-to-left marks or left-to-right marks may be required.](#)

Line 8, Column 1:

```
<body>

<header>
  <h1>HEATHERS: THE MUSICAL</h1>
</header>

<nav>
  <ul>
    <a ...
```

Check 248: [Visual lists may not be properly marked.](#)

Line 8, Column 1:

```
<body>

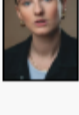
<header>
  <h1>HEATHERS: THE MUSICAL</h1>
</header>

<nav>
  <ul>
    <a ...
```

Check 136: [Data table may require th elements.](#)

Line 61, Column 7:

```
<table>
  <tr>
    <td>
      <figure>
        
```



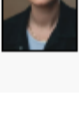
TODAS LAS IMAGENES PUESTAS*

Check 251: [Image may contain text with poor contrast.](#)

Line 65, Column 15:

```

```



TODAS LAS IMAGENES PUESTAS*

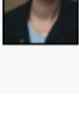
Success Criteria 1.4.5 Images of Text (AA)

Check 11: [Image may contain text that is not in Alt text.](#)

Line 65, Column 15:

```

```



TODAS LAS IMAGENES PUESTAS*

2.4 Navigable: Provide ways to help users navigate, find content, and determine where they are.

Success Criteria 2.4.1 Bypass Blocks (A)

Check 28: [Document may be missing a "skip to content" link.](#)

Line 8, Column 1:

```
<body>

<header>
  <h1>HEATHERS: THE MUSICAL</h1>
</header>

<nav>
  <ul>
    <a ...
```

Check 262: [Groups of links with a related purpose are not marked.](#)

Line 8, Column 1:

```
<body>

<header>
  <h1>HEATHERS: THE MUSICAL</h1>
</header>

<nav>
  <ul>
    <a ...
```

Success Criteria 2.4.2 Page Titled (A)

Check 54: [title might not describe the document.](#)

Line 6, Column 3:

```
<title>Heathers: the musical</title>
```

Success Criteria 2.4.4 Link Purpose (In Context) (A)

Check 19: [Link text may not be meaningful.](#)

Line 16, Column 7:

```
<a href="index.html">INICIO</a>
```

Line 18, Column 7:

```
<a href="hamilton.html">HAMILTON</a>
```

Line 19, Column 7:

```
<a href="waitress.html">WAITRESS</a>
```

Line 20, Column 7:

```
<a href="tick,tick...boom!.html">TICK, TICK...BOOM!</a>
```

Line 21, Column 7:

```
<a href="rent.html">RENT</a>
```

Line 22, Column 7:

```
<a href="wicked.html">WICKED</a>
```

Line 149, Column 80:

```
<a href="../../../index.html">Volver a la página principal</a>
```

Success Criteria 2.4.5 Multiple Ways (AA)

Check 184: [Site missing site map.](#)

Line 8, Column 1:

```
<body>

<header>
  <h1>HEATHERS: THE MUSICAL</h1>
</header>

<nav>
  <ul>
    <a ...
```

Success Criteria 2.4.6 Headings and Labels (AA)

Check 42: [h1 may be used for formatting.](#)

Line 11, Column 5:

```
<h1>HEATHERS: THE MUSICAL</h1>
```

Check 43: [h2 may be used for formatting.](#)

Line 29, Column 7:

```
<h2>TRAILER OFICIAL</h2>
```

Line 35, Column 7:

```
<h2>SOBRE HEATHERS: THE MUSICAL</h2>
```

Line 48, Column 7:

```
<h2>DETALLES DE LA PRODUCCIÓN</h2>
```

Line 60, Column 7:

```
<h2>ELENCO</h2>
```

Line 142, Column 7:

```
<h2>PLAYLIST</h2>
```

3.2 Predictable: Make Web pages appear and operate in predictable ways.

Success Criteria 3.2.3 Consistent Navigation (AA)

Check 276: [Repeated components may not appear in the same relative order each time they appear.](#)

Line 8, Column 1:

```
<body>

<header>
  <h1>HEATHERS: THE MUSICAL</h1>
</header>

<nav>
  <ul>
    <a ...
```

Success Criteria 3.2.4 Consistent Identification (AA)

Check 131: [Long quotations may not be marked using the blockquote element.](#)

Line 8, Column 1:

```
<body>

<header>
  <h1>HEATHERS: THE MUSICAL</h1>
</header>

<nav>
  <ul>
    <a ...
```